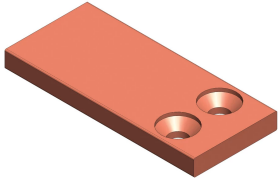


NVENT ERIFLEX FLEXBUS EXTENDER TYPE 2 FLAT AND PLAIN



CERTIFICATIONS



FEATURES

Designed to extend the Flexbus Conductors

Delivered with the appropriate countersunk head screws, nuts and washers

SPECIFICATIONS

Material Copper

Catalog Number	Item Name	Conductor Size	Unit Weight
FLEXEXT50A2	508111	220 mm ² , 360 mm ² , 545 mm ²	1.217 lb
FLEXEXT50B2	508114	640 mm ²	1.971 lb
FLEXEXT1002	508117	960 mm ² , 1280 mm ² , 1810 mm ²	4.475 lb

WARNING

nVent products shall be installed and used only as indicated in nVent's product instruction sheets and training materials. Instruction sheets are available at www.nvent.com and from your nVent customer service representative. Improper installation, misuse, misapplication or other failure to completely follow nVent's instructions and warnings may cause product malfunction, property damage, serious bodily injury and death and/or void your warranty.

North America

+1.800.753.9221

Option 1 – Customer Care

Option 2 – Technical Support

Europe

Netherlands:

+31 800-0200135

France:

+33 800 901 793

Europe

Germany:

800 1890272

Other Countries:

+31 13 5835404

APAC

Shanghai:

+ 86 21 2412 1618/19

Sydney:

+61 2 9751 8500



Our powerful portfolio of brands:
nVent.com CADDY ERICO HOFFMAN RAYCHEM SCHROFF
TRACER